

SPECIFICATION FOR APPROVAL

Switching power Supply

Customer: **LYC0998** OUR MODEL NO: **LY036SPS-240200V1**

Input: **100~240VAC 50- 60Hz** Output: **24VDC 2A** INSIDE NO: **LY-**

S12354 DATE: **2020-07-28**

/SAMPLE COLOR:

Black

White

Other

Customer		
/APPROVED BY	/CHECKED BY	TESTED BY

Manufacturer		
/APPROVED BY	/CHECKED BY	TESTED BY

Our model:LY036SPS-240200V1

Customer:LYC0998

Date:2020-07-28

SAMPLE No:LY-S12354

Rev. List

Rev	Date	Description	Design
A0	2020-07-28	New Rev	

Table of contents

1、 DESCRIPTION..... 3

2、 INPUT CHARACTERISTICS..... 3

3、 OUTPUT CHARACTERISTICS.....4-5

4、 /PROTECTION FUNCTION..... 5

5、 ENVIRONMENTAL REQUIREMET.....5-6

6、 SAFETY REQUIREMENT..... 6

7、 MECHANICAL REQUIREMENT.....7

8、 LABEL.....8

9、 PACKING..... 9

10、 ELECTRICAL TEST REPORT..... 10

Our model:LY036SPS-240200V1

Customer:LYC0998

Date:2020-07-28

SAMPLE No:LY-S12354

1、 DESCRIPTION:

LY036SPS-240200V1

The purpose of the document is to specify the functional requirements of a **48** W switching power supply.

2、 INPUT CHARACTERISTICS:

2.1 Input Voltage:

Rated Voltage:100-240Vac Variation Range:90-264Vac

2.2 Input Frequency:

Rated Frequency: 50-60Hz

Variation Frequency:47-63Hz

2.3 Input Current:

1 A。

1 Amps max At any input voltage and rated, DC output rated load.

2.4 Inrush Current:

25°C, 240Vac 100A。

100 Amps Max. Cold start at 240Vac input, with rated load and 25°C ambient.

2.5AC Ac Leakage Current:

240Vac 0.25mA。

0.25mA Max.At240Vac input.

Our model:LY036SPS-240200V1

Customer:LYC0998

Date:2020-07-28

SAMPLE No:LY-S12354

3、 OUTPUT CHARACTERISTICS:

3.1 Power output

Voltage	Min. Load	Rated. Load	Peak	Output power
24Vdc	0.01A	2A		48W

3.2 Combined Load/Line Regulation

Voltage	Min. Load	Rated. Load	Line Regulation	Load Regulation
24Vdc	0.01A	2A	±3%	±5%

3.3 Ripple and Noise:

Under nominal voltage and nominal load,the ripple and noise are as follows when measure with Max.Bandwidth of 20MHz and Parallel 47uF/0.1uF,crossed connected at testing point.

Voltage Ripple and Noise(Max.)

+24Vdc 120mV p-p

3.4 Turn on delay time: 115Vac 2S。

2Second Max.at 115Vac input and output Max.load.

3.5 Rise time: 115Vac 40 mS。

40 mS Max.at 115Vac input and output Max load.

3.6 Hold up time: 115Vac 5 mS。

5 mS Min.at 115Vac input and output Max.Load.

3.7 Average Efficiency: 115Vac 100%、 75%、 50%、 25% 87.77%。

Average Efficiency87.77%Min. at 115Vac input and output 100%Load、 75%Load、 50%Load、 25%Load.

230Vac 100% 75% 50%、 25% 87.77%。

Average Efficiency87.77%Min. at 230Vac input and output 100%Load、 75%Load、 50%Load、 25%Load.

Ourmodel:LY036SPS-240200V1

Customer:LYC0998

Date:2020-07-28

SAMPLE No:LY-S12354

3.8 Overshoot: 10%。

10% Max.When power supply at turn or turn off.

4、 PROTECTION FUNCTION:

4.1 Short circuit protection:

The power supply will be auto recovered when short circuit faults remove.

4.2 Over current Protection:

The power supply will be auto recovered when over current faults remove.

4.3 Over Voltage Protection:

VCC 150%~180%

When VCC more than 150% to 180% of rated voltage, power supply will protect, can resume normal work after troubleshooting.

5、 ENVIRONMENTAL REQUIREMET:

5.1 Operating Temperature:

0℃-40℃,

0℃ to 40℃,Full load, Normal operation.

5.2 Storage Temperature:-20℃ to 80℃ With package

5.3 Relative Humidity:

5%(0℃)~90%(40℃),72。

5%(0℃)~90%(40℃)RH,72Hrs,Full load, Normal operating.

5.4 Vibration:

1.

Operating: IEC 721-3-3 3M3

5~9Hz,A=1.5mm


(9~200Hz,Acceleration 5m/S²)

2. Transportation:

IEC 721-3-2 2M2

5-9Hz,A=3.5mm

9~200Hz, Acceleration=5m/S²

	Ourmodel:LY036SPS-240200V1
	Customer:LYC0998
	Date:2020-07-28
	SAMPLE No:LY-S12354

200~500Hz, Acceleration=15m/S²

3/Axes,10 cycles per axis.

No permanent damage may occur during testing.

The SAMPLE has to restore to its original situation after power off/on..

5.5 Dropping Packed:

1 corner,3 edges, and 6 surfaces, For 1cm min Wooden floor for Dropping.

75cm±10cm/Height:75cm±10cm.

6、SAFETY REQUIREMENT:

6.1 DIELECTRIC STRENGTH Hi-Pot:

Primary to secondary:

4242VDC/10mA/60S or 3000VAC/10mA/60S for type test.

6.2 Insulation resistance: Primary to secondary:100M Ω min at 500V DC.

6.3 EN 62368。

Safety:accord standard with EN 62368.

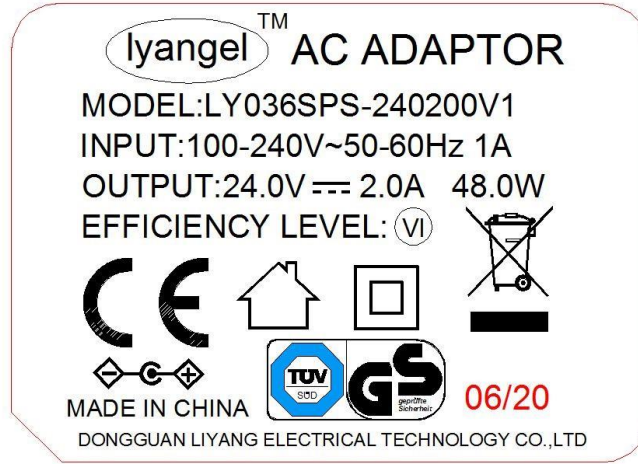
Ourmodel:LY036SPS-240200V1

Customer:LYC0998

Date:2020-07-28

SAMPLE No:LY-S12354

8. LABEL:



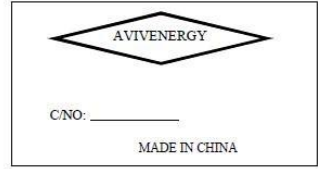
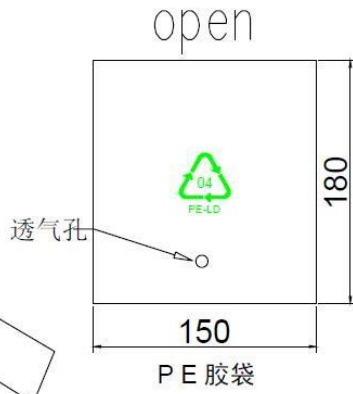
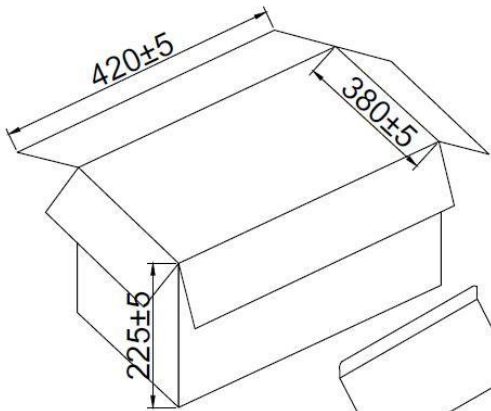
Ourmodel:LY036SPS-240200V1

Customer:LYC0998

Date:2020-07-28

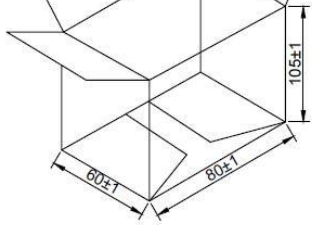
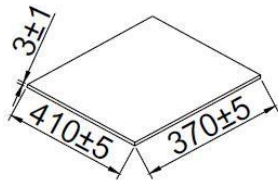
SAMPLE No:LY-S12354

9、PACKING:



正唛 (中间)

ITEM:	Adapter 24V2A LY0036SPS-240200V1
DC:	5.5*2.5*11mm Center(+)
QTY:	60 PCS
PL/NO:	LY20200723-001 / A072025
DATE:	08/20
NW:	KG
GW:	KG
SIZE:	42*38*22.5CM



包材/Packaging:

外箱内径/Inside box:L420*W380*H225mm材质K=K

平板/Slab:L410*W370*H3mmt:材质B33

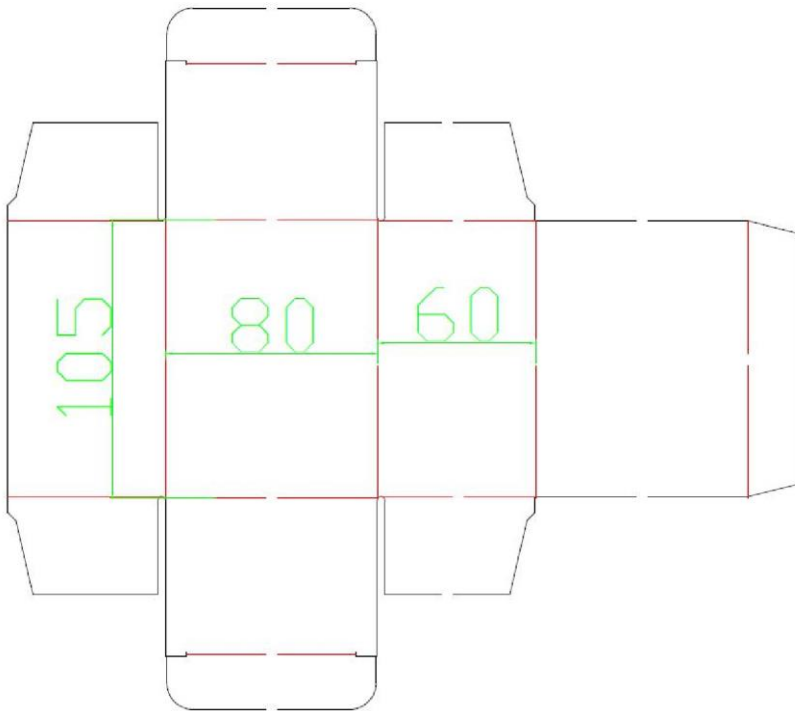
小白盒外径/Small white box:L80*W60*H105 350g

PE袋:180*150mm

数量/Quantity:60PCS/CTN

五列六排两层

侧唛 (中间)





东莞市里洋电器科技有限公司
DONGGUAN LIYANG ELECTRICAL TECHNOLOGY CO., LTD

型号/Our model: LY036SPS-240200V1

客户/Customer: LYC0998

日期/Date: 2020-07-28

样品编号/SAMPLE No: LY-S12354

10、测试报告/ELECTRICAL TEST REPORT:

No 序号	Test item 测试项目	Test condition 测试条件	Standard spec 标准规格	Test data 测试数据					Unit 单位	Judge 判定
				1	2	3	4	5		
1	Output Voltage 输出电压	Vin100Vac 60Hz Io=0 输入 100Vac 空载	±5%						V	Pass
2	Output Voltage 输出电压	Vin100Vac 60Hz Io=Rated Current 输入 100Vac 60Hz 额定电流	±5%						V	Pass
3	Average Efficiency 平均效率	Vin 115Vac 60Hz 输入 115Vac 60Hz	87.77%						%	Pass
4	Ripple&Noise mVp-p 纹波&杂讯	Vin100Vac 60Hz Full load 输入 100Vac 60Hz 满载	120mVp-p						mVp-p	Pass
5	Line Regulation 线性调整率	Vin=100V~240V Io=Rated Current 额定电流	±3%							Pass
6	Standby Power 待机功耗	Vin 115Vac 60Hz Io=0 输入 115Vac 60Hz	0.1W max						W	Pass
7	Short 短路	Vin100Vac 60Hz 输入 100Vac 空载	No odor smoke fire plastic deformation and excessive heat happen. 无冒烟,起火,外壳变 形及过热现象							Pass
8	Output Voltage 输出电压	Vin240Vac 50Hz Io=0 输入 240Vac 空载	±5%						V	Pass
9	Output Voltage 输出电压	Vin240Vac 50Hz Io=Rated Current 输入 240Vac 60Hz 额定电流	±5%						V	Pass
10	Average Efficiency 平均效率	Vin230Vac 50Hz 输入 230Vac 50Hz	87.77%						%	Pass
11	Ripple & Noise mVp-p 纹波&杂讯	Vin240Vac 50Hz Full load 输入 240Vac 50Hz 额定电流	120mVp-p						mVp-p	Pass
12	Line Regulation 线性调整率	Vin=100V~240V Io=Rated Current 输入 100V~240V	±3%							Pass
13	OCP	Vin=90VAC	>1.2*I						A	Pass
14	OCP	Vin=264VAC	>1.2*I						A	Pass
15	Standby Power 待机功耗	Vin230Vac 50Hz Io=0 输入 230V 50Hz	0.1W max						W	Pass
16	Short 短路	Vin240Vac 50Hz 输入 240Vac 50Hz	No odor smoke fire plastic deformation and excessive heat happen. 无冒烟,起火,外壳变 形及过热现象							Pass
17	Hi-ot test 高压测试	高压/DIELECTRIC STRENGTH Hi-Pot: 初级对次级/Primary to secondary:4242Vdc/5mA/3S or 3000Vac/5mA/3S for type test								Pass
18	Burn in 老化	Input:220Vac/50Hz Full Load 4hrs 输入 220Vac/50Hz 满载 4 小时								Pass
19	Drop test 跌落	Heigh:75cm Three*faces(onceon each plane) For 1cm min Wooden floor for Dropping. 高 75 厘米,3 个面,每面 1 次.对 1cm 以上木质地板 进行跌落.								Pass
REMARK 备注										